

## LEGEND & SCHEDULE

(+) Indicates Ku-ring-gai Council's Blue Gum High Forest endemic plant list.

### Native Canopy Trees

**Eucalyptus paniculata (+)**  
Grey Ironbark (Native)  
Pot size: 75L  
Mature H x S: 15-25m x 5-10m  
Qty Required: 8

**Acmena smithii (+)**  
Lillypilly (Native)  
Pot size: 75L  
Mature H x S: 15m x 6m  
Qty Required: 117

**Eucalyptus saligna (+)**  
Sydney Blue Gum (Native)  
Pot size: 75L  
Mature H x S: 15-25m x 5-10m  
Qty Required: 10

**Angophora floribunda (+)**  
Rough Barked Apple (Native)  
Pot size: 75L  
Mature H x S: 15-20m x 5-7m  
Qty Required: 210

**Deciduous Trees**

**Nyssa sylvatica**  
Sweet Gum (Exotic)  
Pot size: 100L  
Mature H x S: 10m x 4-5m  
Qty Required: 25

**Acer buergerianum**  
Chinese Tamarack (Exotic)  
Pot size: 100L  
Mature H x S: 5-10m x 3-4m  
Qty Required: 4

**Platanus x hybrida**  
London Plane Tree (Exotic)  
Pot size: 100L  
Mature H x S: 15-20m x 5-8m  
Qty Required: 2

**Private Courtyard Trees**

**Albizia julibrissin**  
Silk Tree (Exotic)  
Pot size: 75L  
Mature H x S: 4m x 3m  
Qty Required: 12

**Small Native Trees**

**Eleocharis reticulata (+)**  
Bamboo (Native)  
Pot size: 25L  
Mature H x S: 10m x 3-4m  
Qty Required: 17

**Syzygium luehmannii**  
Small leaved Lillypilly (Native)  
Pot size: 25L  
Mature H x S: 3-4m x 2m  
Qty Required: 12

**Ceratopetalum gummifera**  
NSW Christmas Tree (Native)  
Pot size: 25L  
Mature H x S: 4-5m x 3-4m  
Qty Required: 10

**Pittosporum revolutum (+)**  
Yellow Pittosporum (Native)  
Pot size: 25L  
Mature H x S: 3-5m x 3-4m  
Qty Required: 6

**Shrubs**

**Notelaea longifolia (+)**  
Long Leafed Olive (Native)  
Pot size: 100m  
Mature H x S: 3-4m x 2m  
Qty Required: 49

**Bursaria spinosa (+)**  
Blackberry (Native)  
Pot size: 200m  
Mature H x S: 3m x 2m  
Qty Required: 27

**Personia linearis (+)**  
Geoberry (Native)  
Pot size: 200m  
Mature H x S: 2-3m x 1-2m  
Qty Required: 33

**Pittosporum "Miss Muffet"**  
Dwarf Pittosporum (Native)  
Pot size: 200m  
Mature H x S: 1.5m x 1.5m  
Qty Required: 75

**Dodonaea viscosa "Purpurea"**  
Purple Sticky Bush (Native)  
Pot size: 200m  
Mature H x S: 3-4m x 2m  
Qty Required: 59

**Banksia spinulosa**  
Harpe (Native)  
Pot size: 200m  
Mature H x S: 1.5m x 1.5m  
Qty Required: 56

**Kunzea ambigua**  
Kunzea (Native)  
Pot size: 200m  
Mature H x S: 2-3m x 2m  
Qty Required: 38

**Acmena "Cherry Surprise"**  
Cherry Surprise Lillypilly (Native)  
Pot size: 25L  
Mature H x S: 2-3m x 1-2m  
Qty Required: 25

**Feature Plants**

**Doryanthes excelsa**  
Gympie Lily (Native)  
Pot size: 100m  
Mature H x S: 1.5m x 1m  
Qty Required: 6

**Spathoglottis "Tension"**  
Peace Lily csp (Exotic)  
Pot size: 200m  
Mature H x S: 1m x 1m  
Qty Required: 112

**Cyathea australis**  
Rough Tree Fern (Native)  
Pot size: 300m  
Mature H x S: 2-6m x 1m  
Qty Required: 3

**Strelitzia reginae**  
Giant Bird of Paradise (Exotic)  
Pot size: 300m  
Mature H x S: 3-5m x 2-3m  
Qty Required: 6

**Xanthorrhoea arbores**  
Bottle Tree (Native)  
Pot size: 100L  
Mature H x S: 1.5m x 1m  
Qty Required: 6

**Phormium "Maori Maiden"**  
Maori Maiden (Native)  
Pot size: 200m  
Mature H x S: 1m x 1m  
Qty Required: 133

**Grasses / Groundcovers**

**Dianella "Little Jess"**  
Blue Star Lily csp (Native)  
Pot size: 100m  
Mature H x S: 400mm x 400mm  
Qty Required: 465

**Lomandra longifolia "Nyalia"**  
Maid Rush csp (Native)  
Pot size: 100m  
Mature H x S: 700mm x 700mm  
Qty Required: 195

**Viola hederacea (+)**  
Native Violet (Native)  
Pot size: 100m  
Mature H x S: 200mm x 900mm  
Qty Required: 150

**Poa polyneia "Kingsdale"**  
Blue Coastal Tussock Grass (Native)  
Pot size: 100m  
Mature H x S: 600mm x 600mm  
Qty Required: 289

**Liriodendron "Emerald Giant"**  
Lily Turf csp (Exotic)  
Pot size: 100m  
Mature H x S: 700mm x 700mm  
Qty Required: 100

**Imperata cylindrica (+)**  
Imperata (Native)  
Pot size: 100m  
Mature H x S: 700mm x 600mm  
Qty Required: 100

**Lomandra longifolia "Tanika"**  
Dwarf Maid Rush (Native)  
Pot size: 100m  
Mature H x S: 600mm x 700mm  
Qty Required: 215

**Tracholopium jasmineoides**  
Star Jasmine (Exotic)  
Pot size: 100m  
Mature H x S: 1m x 1m  
Qty Required: 117

**Lomandra longifolia (+)**  
Maid Rush (Native)  
Pot size: 100m  
Mature H x S: 900mm x 900mm  
Qty Required: 117

**Front boundary mass planting:**

- 3 Eucalyptus paniculata

- 2 Angophora floribunda

- 65 Viburnum (hedge)

- 15 Doryanthes excelsa

- 70 Lomandra "Nyalia"

- 100 Poa "Kingsdale"

**Unit 1 courtyard:**

- 4 S. "Resilience" (hedge)

- 1 Albizia julibrissin

- 3 Peace Lily

- Retractable clothes line

**Unit 5 courtyard:**

- 6 S. "Resilience" (hedge)

- 1 Albizia julibrissin

- 5 Liriope

- Retractable clothes line

**Feature planting to building:**

- 2 Syzygium luehmannii

- 6 Cyathea australis

- 19 Syzygium "Cascade"

- 42 Phormium

- 24 Pittosporum "Miss Muffet"

- 8 Imperata cylindrica

- 75 Star Jasmine

**Unit 2 courtyard:**

- 9 S. "Resilience" (hedge)

- 1 Albizia julibrissin

- 5 Liriope

- Retractable clothes line

**Unit 3 courtyard:**

- 11 S. "Resilience" (hedge)

- 1 Albizia julibrissin

- 5 Liriope

- Retractable clothes line

**Unit 4 courtyard:**

- 9 S. "Resilience" (hedge)

- 1 Albizia julibrissin

- 5 Liriope

- Retractable clothes line

**Unit 5 courtyard:**

- 6 S. "Resilience" (hedge)

- 1 Albizia julibrissin

- 5 Liriope

- Retractable clothes line

**Unit 6 courtyard:**

- 5 S. "Resilience" (hedge)

- 1 Albizia julibrissin

- 3 Peace Lily

- Retractable clothes line

**Unit 7 courtyard:**

- 5 S. "Resilience" (hedge)

- 1 Albizia julibrissin

- 3 Peace Lily

- Retractable clothes line

**Unit 8 courtyard:**

- 9 S. "Resilience" (hedge)

- 1 Albizia julibrissin

- 3 Peace Lily

- Retractable clothes line

**Unit 9 courtyard:**

- 9 S. "Resilience" (hedge)

- 1 Albizia julibrissin

- 3 Peace Lily

- Retractable clothes line

**Unit 10 courtyard:**

- 15 S. "Resilience" (hedge)

- 1 Albizia julibrissin

- 3 Peace Lily

- 10 Liriope

- Retractable clothes line

**Entrance planting:**

- 3 Cyathea australis

- 2 Syzygium "Cascade"

- 7 P. "Maori Maiden"

**Unit 10 Lower courtyard:**

- 15 S. "Resilience" (hedge)

- 1 Albizia julibrissin

- 3 Peace Lily

- 10 Liriope

**Native mass planting under existing tree:**

- 5 Eleocharis reticulata

- 3 Ceratopetalum

- 16 Notelaea longifolia

- 21 Kunzea ambigua

- 14 Banksia spinulosa

- 16 Doryanthes excelsa

- 6 Xanthorrhoea

- 20 Lomandra longifolia

- 25 Imperata cylindrica

- 25 Lomandra "Nyalia"

- 80 Lomandra "Tanika"

- 15 Poa "Kingsdale"

**Mass planting to front boundary:**

- 1 Eucalyptus paniculata

- 1 Angophora floribunda

- 30 Viburnum (hedge)

- 9 Doryanthes excelsa

- 55 Poa "Kingsdale"

**Feature planting to building:**

- 5 Cyathea australis

- 17 Syzygium "Cascade"

- 16 Phormium

- 40 Star Jasmine

**Mass planting to front lawn:**

- 3 Eucalyptus saligna

- 4 Pittosporum revolutum

- 30 Dodonaea "Purpurea"

- 7 Notelaea longifolia

- 6 Bursaria spinosa

- 6 Doryanthes excelsa

- 28 Imperata cylindrica

- 25 Poa "Kingsdale"

- 25 Lomandra "Tanika"

- 120 Dianella "Little Jess"

- 30 Star Jasmine

**Feature planting central arcade:**

- 2 Platanus x hybrida

- 4 Acer buergerianum

- 3 Syzygium luehmannii

- 7 Cyathea australis

- 46 Syzygium "Cascade"

- 26 Doryanthes excelsa

- 12 Phormium

- 30 Peace Lily

- 11 Pittosporum "Miss Muffet"

- 32 Imperata cylindrica

- 3 Syzygium "Cascade"

- 25 Liriope

- 30 Native Violet

- 130 Star Jasmine

**Feature planting to building:**

- 4 Syzygium luehmannii

- 3 Cyathea australis

- 12 Phormium

- 17 Pittosporum "Miss Muffet"

- 40 Star Jasmine

**Feature planting to building:**

- 4 Syzygium luehmannii

- 3 Cyathea australis

- 12 Phormium

- 17 Pittosporum "Miss Muffet"

- 40 Star Jasmine

**Feature planting to building:**

- 4 Syzygium luehmannii

- 3 Cyathea australis

- 12 Phormium

- 17 Pittosporum "Miss Muffet"

- 40 Star Jasmine

**Feature planting to building:**

- 4 Syzygium luehmannii

- 3 Cyathea australis

- 12 Phormium

- 17 Pittosporum "Miss Muffet"

- 40 Star Jasmine

**Feature planting to building:**

- 4 Syzygium luehmannii

- 3 Cyathea australis

- 12 Phormium

- 17 Pittosporum "Miss Muffet"

- 40 Star Jasmine

**Feature planting to building:**

- 4 Syzygium luehmannii

- 3 Cyathea australis

- 12 Phormium

- 17 Pittosporum "Miss Muffet"

- 40 Star Jasmine

**Feature planting to building:**

- 4 Syzygium luehmannii

- 3 Cyathea australis

- 12 Phormium

- 17 Pittosporum "Miss Muffet"

- 40 Star Jasmine

**Feature planting to building:**

- 4 Syzygium luehmannii

- 3 Cyathea australis

- 12 Phormium

- 17 Pittosporum "Miss Muffet"

- 40 Star Jasmine

**Feature planting to building:**

- 4 Syzygium luehmannii

- 3 Cyathea australis

- 12 Phormium

- 17 Pittosporum "Miss Muffet"

- 40 Star Jasmine

**Feature planting to building:**

- 4 Syzygium luehmannii

- 3 Cyathea australis

- 12 Phormium

- 17 Pittosporum "Miss Muffet"

- 40 Star Jasmine

**Feature planting to building:**

- 4 Syzygium luehmannii

- 3 Cyathea australis

- 12 Phormium

- 17 Pittosporum "Miss Muffet"

- 40 Star Jasmine

**Feature planting to building:**

- 4 Syzygium luehmannii

- 3 Cyathea australis



BASIX CALCULATIONS

**Common Area:** Garden: 1560m2  
Lawn: 411.1m2  
Basix planting: 0m2

**Ground Floor Private Courtyards:**

- Unit 1:** Garden: 4.6m2
- Unit 2:** Garden: 8.2m2
- Unit 3:** Garden: 9.5m2
- Unit 4:** Garden: 5.9m2
- Unit 5:** Garden: 5.6m2
- Unit 6:** Garden: 10.7m2
- Unit 7:** Garden: 18.6m2
- Unit 8:** Garden: 7.2m2
- Unit 9:** Garden: 8.9m2
- Unit 10:** Garden: 5.4m2
- Unit 11:** Garden: 23.1m2

**Penthouse Private Courtyards:**

- Unit 48:** Garden: 13.2m2
- Unit 49:** Garden: 17.8m2
- Unit 50:** Garden: 3.5m2

**Note:** No lawn or basix compliant (endemic / low water use) planting has been proposed for private courtyards.



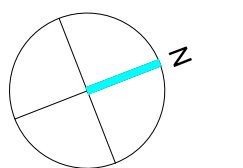
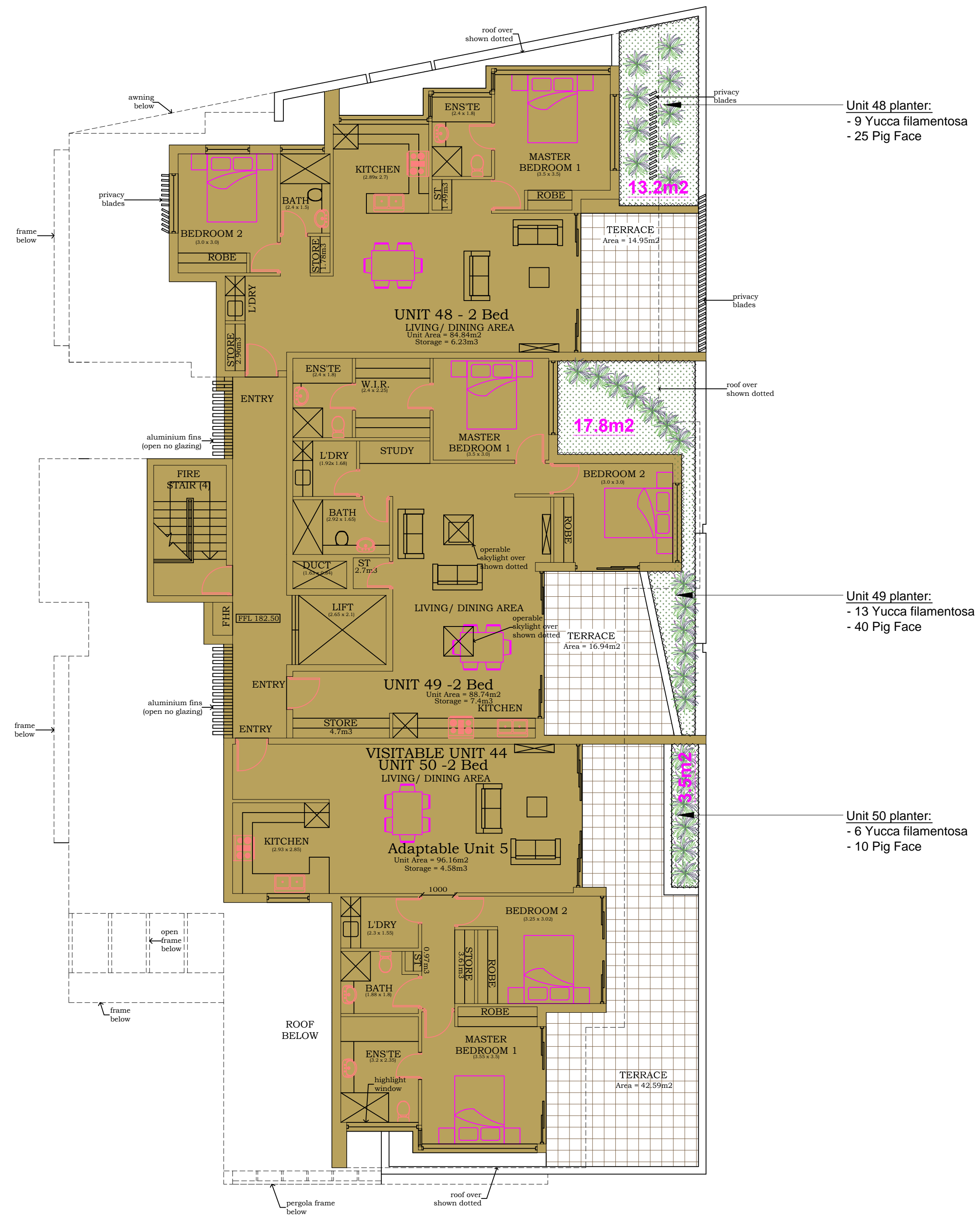
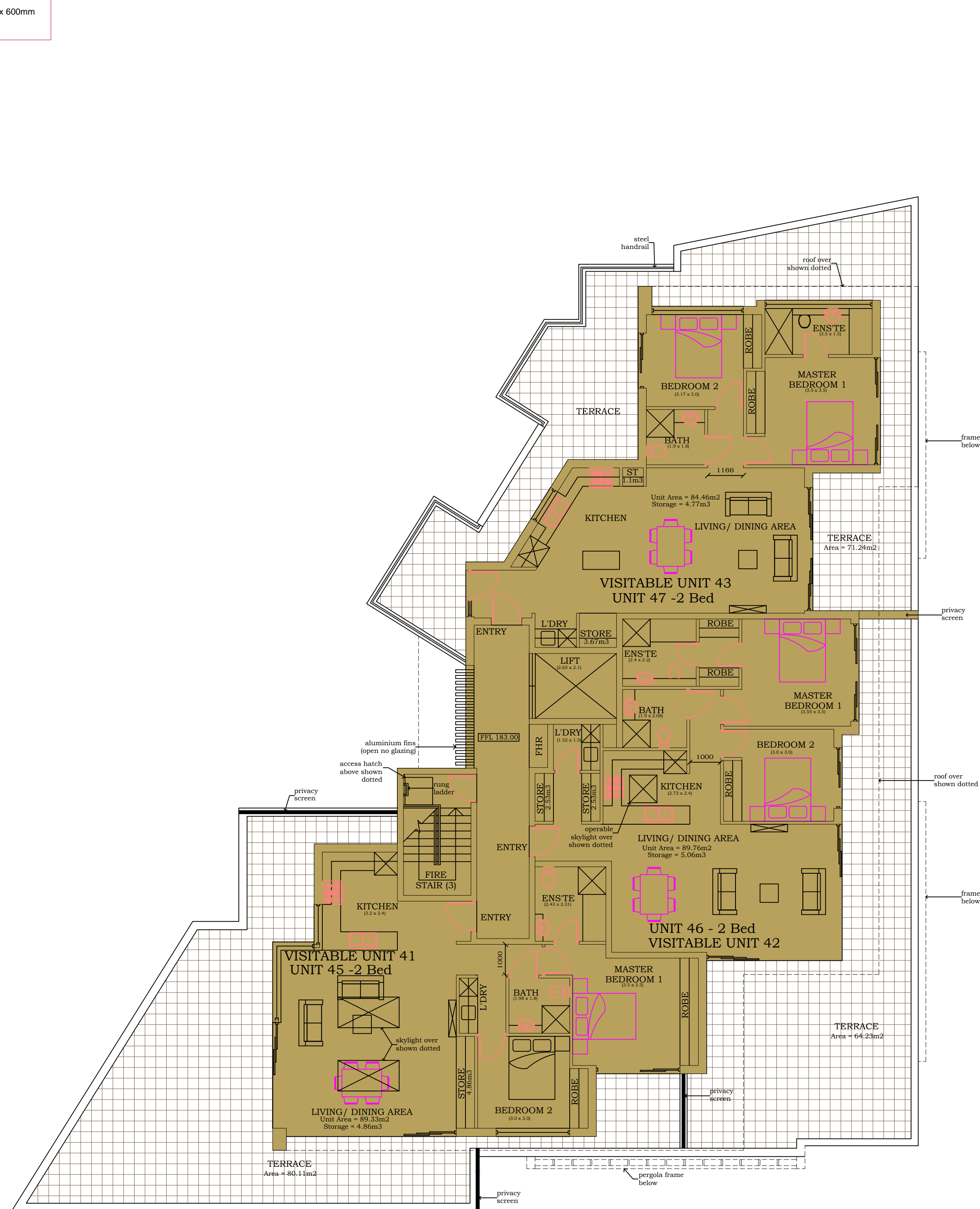


The image contains two illustrations. The top illustration is of a Yucca filamentosa plant, showing a central rosette of long, narrow, pointed leaves with a green base color and purple variegation along the edges. The bottom illustration is of a Carpobrotus rossii plant, depicted as a rectangular patch of ground covered with small, round, fleshy-leaved succulents arranged in a grid-like pattern.




www.dialbeforeyoudig.com.au

 **DIAL1100**  
BEFORE YOU DIG



**Bar Scale**



<div>ARCHITECT: <b>MACKENZIE ARCHITECTS</b> Chartered Architect No. 6033 ABN 46 129 592 772  4/3 The Posham Castlereagh NSW 2048 Phone: (02) 9967 9966 Fax: (02) 9967 9977 <a href="http://www.mackenziearchitects.com.au">www.mackenziearchitects.com.au</a> <a href="mailto:info@mackenziearchitects.com.au">info@mackenziearchitects.com.au</a></div>			<div>LANDSCAPE ARCHITECT:  PO Box 410, CREMORNE 2090 79 Ashdon Street, CREMORNE NSW 2090 Phone: 9438 1744 Fax: 9438 1766 Mob: 0415 861 351 <a href="http://www.concept.net.au">www.concept.net.au</a> <a href="mailto:enquiries@concept.net.au">enquiries@concept.net.au</a></div>			<div>CLIENT: <b>MR JOHN ZHANG</b>  LANDSCAPE ARCHITECT <b>CONCEPT</b> PH (02) 9438 1744 FAX (02) 9438 1766  ARCHITECT <b>MACKENZIE ARCHITECTS</b> PH (02) 9967 9966 FAX (02) 9967 9977</div>			<div>PROJECT:  <b>RESIDENTIAL APARTMENTS</b>  AT <b>2 BOBBIN HD RD &amp; 1147-1149 PACIFIC HWY, PYMBLE</b></div>			<div>TITLE:  <b>PENTHOUSE PLANTERS</b></div>			<div>STATUS: <b>DEVELOPMENT APPROVAL</b></div>											
									SCALE: <b>1:100 @ A1</b>			DATE: <b>DEC 2011</b>			JOB NO:											
REV			DATE			NOTATION/AMENDMENT			ISSUE: <b>C</b>			DWG NO: <b>LPDA 11 - 275 / 4</b>			PLOTTED:			DRAWN:			CHECKED:			APPROVED:		
						DO NOT SCALE DRAWINGS. CHECK ALL DIMENSIONS ON SITE. FIGURED DIMENSIONS TAKE PRECEDENCE.																				



IRRIGATION

The client may choose to have an approved automated drip-irrigation system installed to garden bed areas prior to planting. This system shall be designed and installed by a qualified, licensed irrigation specialist to suit the garden layouts and planting species nominated in the design. Note that endemic and native planting will not require significant watering once established, and that a longer maintenance period should be considered in lieu of irrigation.

Irrigation systems shall be installed in accordance to the latest Sydney Water Irrigation regulations and times, and shall consist of the necessary components to ensure safe, efficient operation. Such components shall include a back-flow prevention valve and moisture sensor to prevent watering during wet periods. The irrigation shall be tested and approved upon completion, and monitored / maintained at 6 monthly periods.

LANDSCAPE MAINTENANCE SCHEDULE

After a landscape compliance certificate has been issued to the Principal Certifying Authority approving the correct installation of landscape construction works and Practical Completion, the maintenance period shall begin.

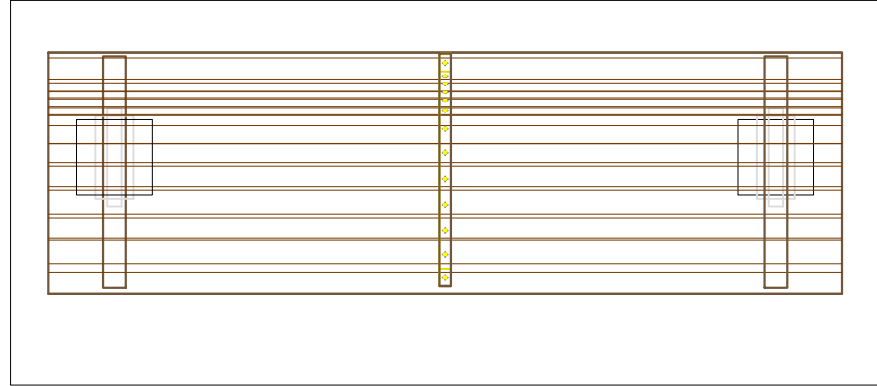
Consolidation & landscape maintenance shall mean the care and maintenance of the contracted landscape works using acceptable horticultural practices, ensuring that all plants and planting areas experience the optimum growing conditions and are in excellent appearance at all times, as well as the rectification of defects which have resulted from regular use.

The landscape maintenance period shall be a minimum of **3 months (12 weeks) or as required by Council**, or requested by client, from the certificate date, and shall include, but not be limited to the following maintenance works;

- Replacement of dead, damaged, stolen, unhealthy or diseased plants (at the reasonable discretion of client / landscape architect)
- Watering all garden areas as required by hand to ensure plant establishment without loss / irrigation maintenance (monitor soil moisture)
- Clearing litter and other debris from landscaped & lawn areas
- Monitoring for pests and disease & treat as required
- Fertilizing with approved fertilizer at rates applicable to plant species
- Adjusting stakes and ties / removing as tree mature
- Mowing lawn areas, watering, edging and weeding as required (Mowing at period of 18 days during summer & 21 during winter)
- Topping up mulch areas and keeping beds free or weeds
- Making good areas of soil subsistence or erosion & repair problem
- Maintaining all hard and semi permeable areas including topping / raking gravel and decomposed granite areas, cleaning / weeding paving etc)

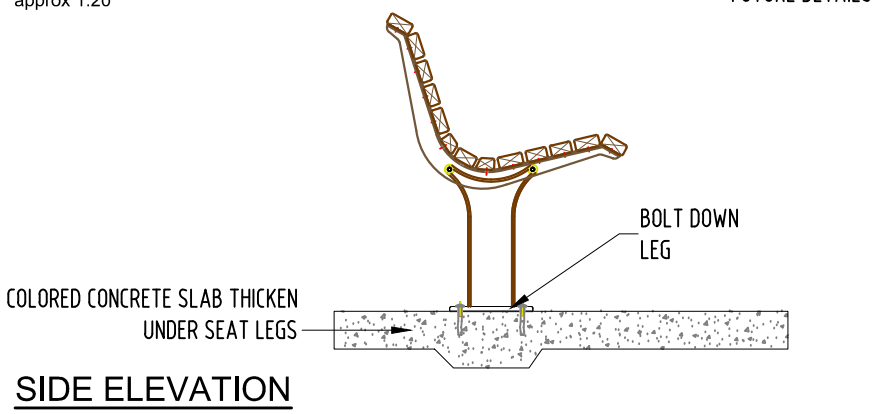
NOTES

1. ALL TIMBER TO BE DAR SEASONED HARDWOOD, U.N.O.
2. ALL FIXINGS TO BE 316 GRADE STAINLESS STEEL.



PLAN VIEW

approx 1:20



SIDE ELEVATION

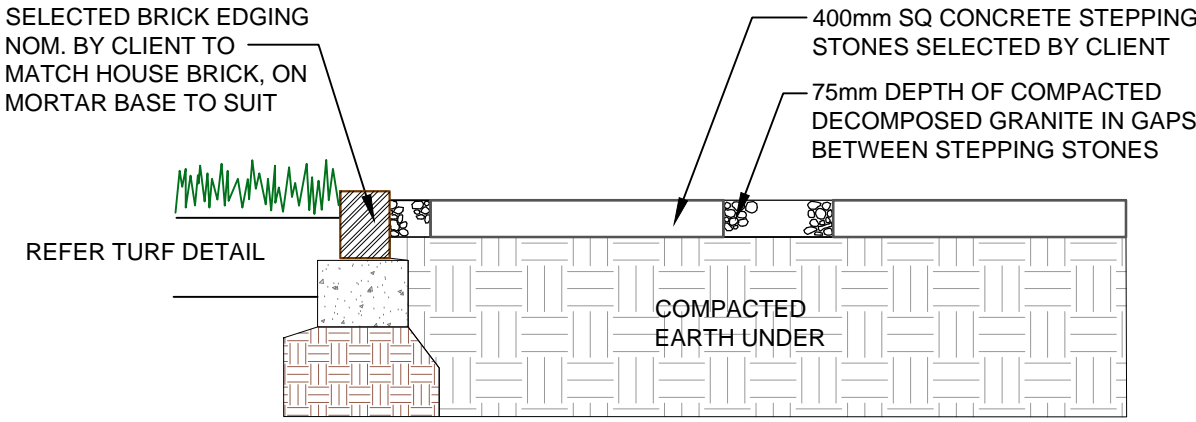
approx 1:20

BENCH SEATING

scale as shown

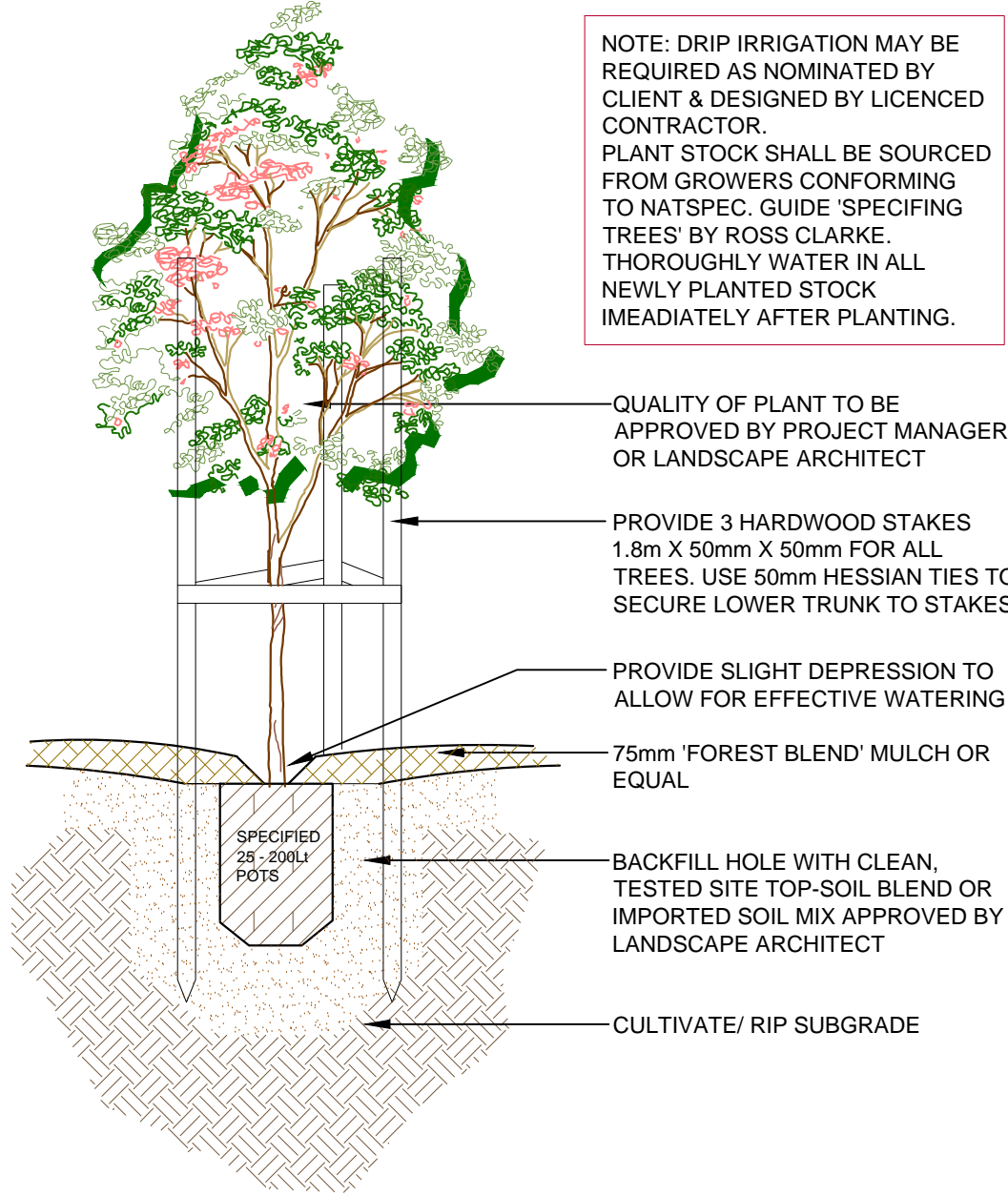
**K050 San Marco Seat**  
Dimensions: 2100mm x 650mm  
Frame: Black Powder Coated finish  
Boards: Dressed All Round Seasoned Iombark Hardwood  
Timber Finish: Factory applied Oil Based Preservative stain  
Fixings: Stainless Steel 316 grade  
Footings: Bolt to Ground, vandal resistant fixings

Pre-fabricated outdoor furniture supplied by Landmark Australia Details adapted from drawings provided by Landmark Australia for this product



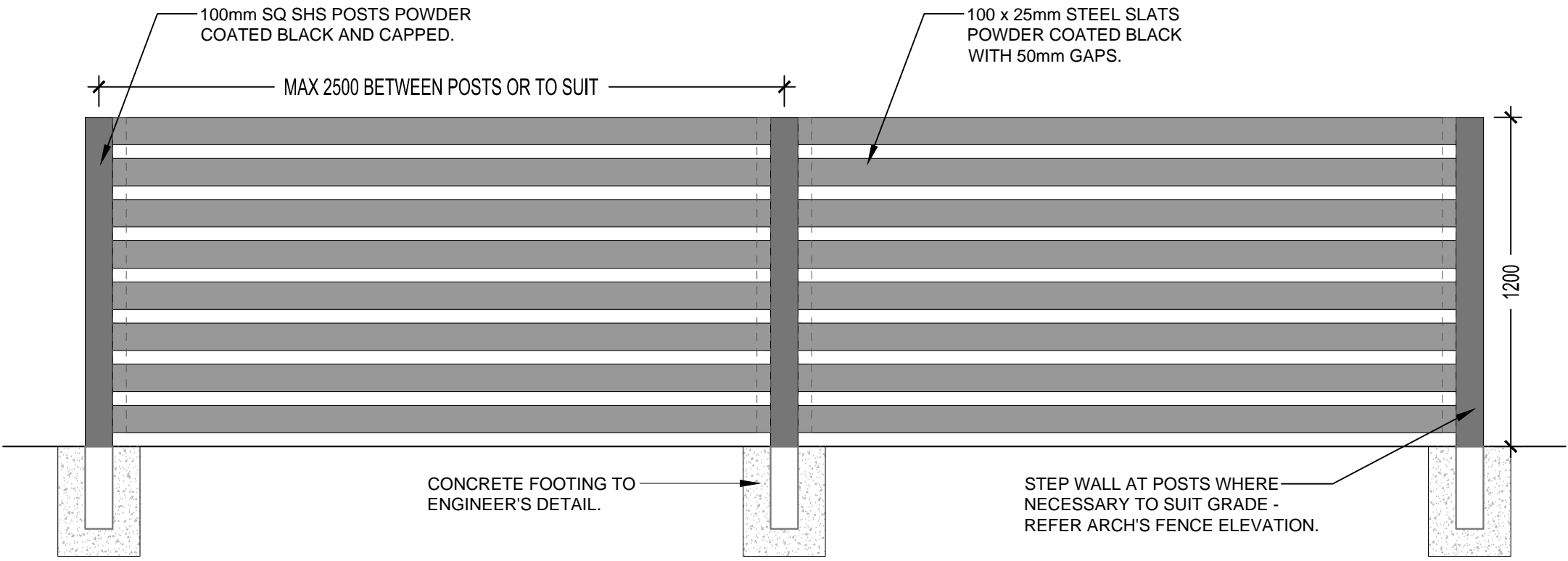
STEPPING STONES & BRICK EDGE DETAIL

approx 1:10



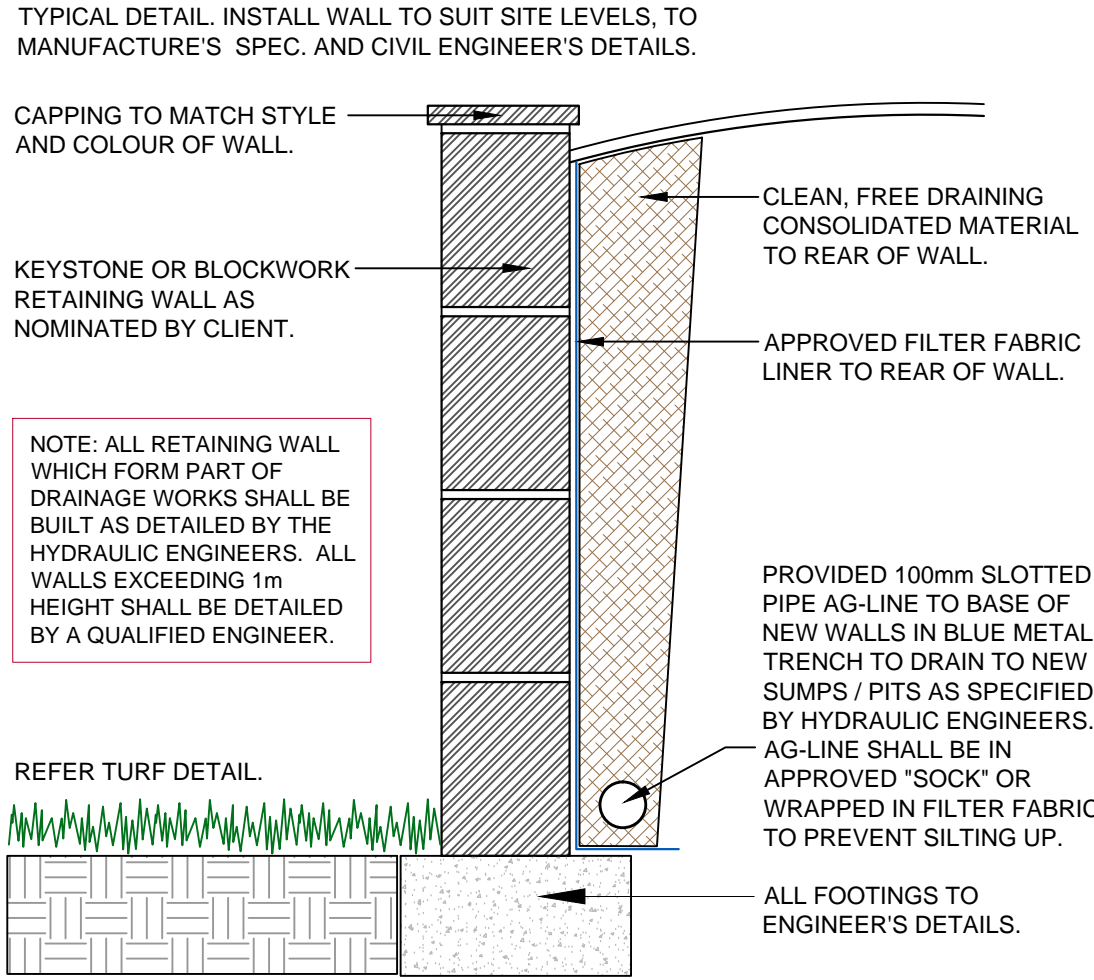
INDIVIDUAL TREE PLANTING DETAIL

approx 1:10



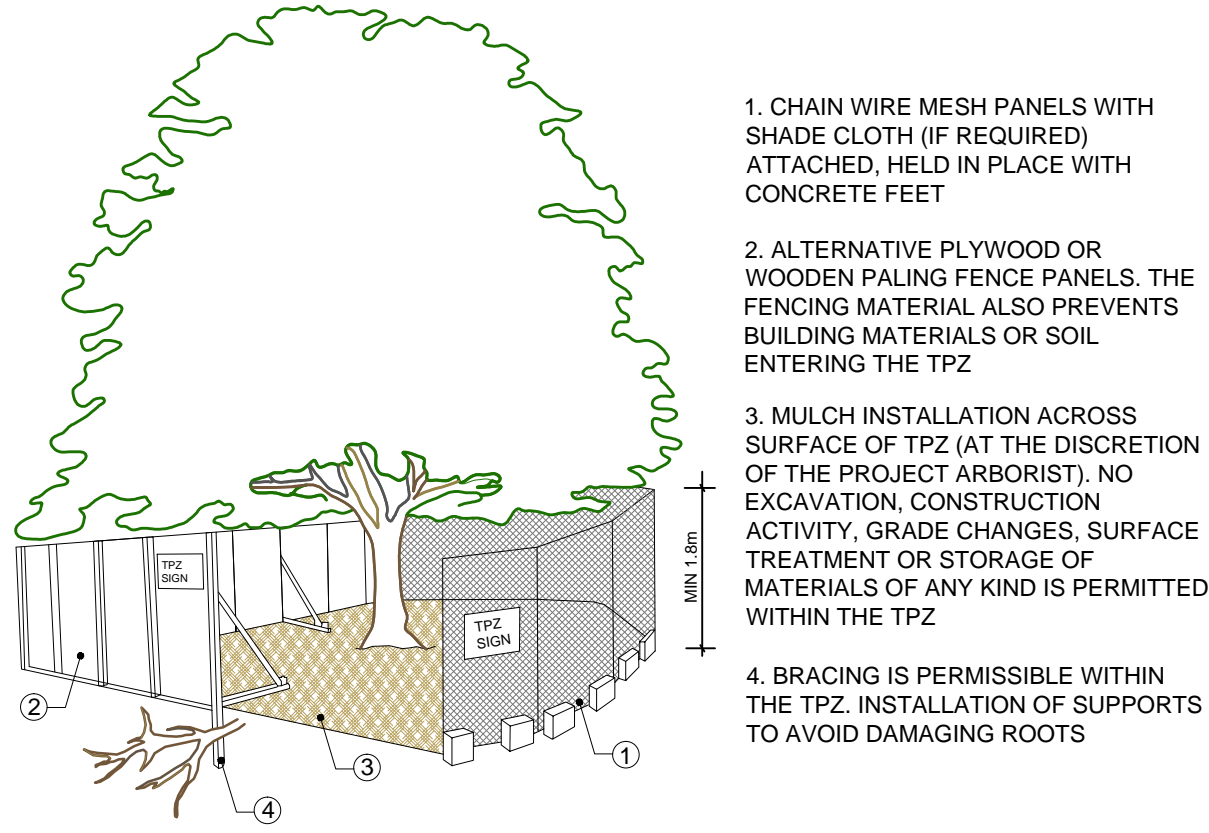
1.2m LIGHTWEIGHT METAL FRONT BOUNDARY FENCE

approx 1:20



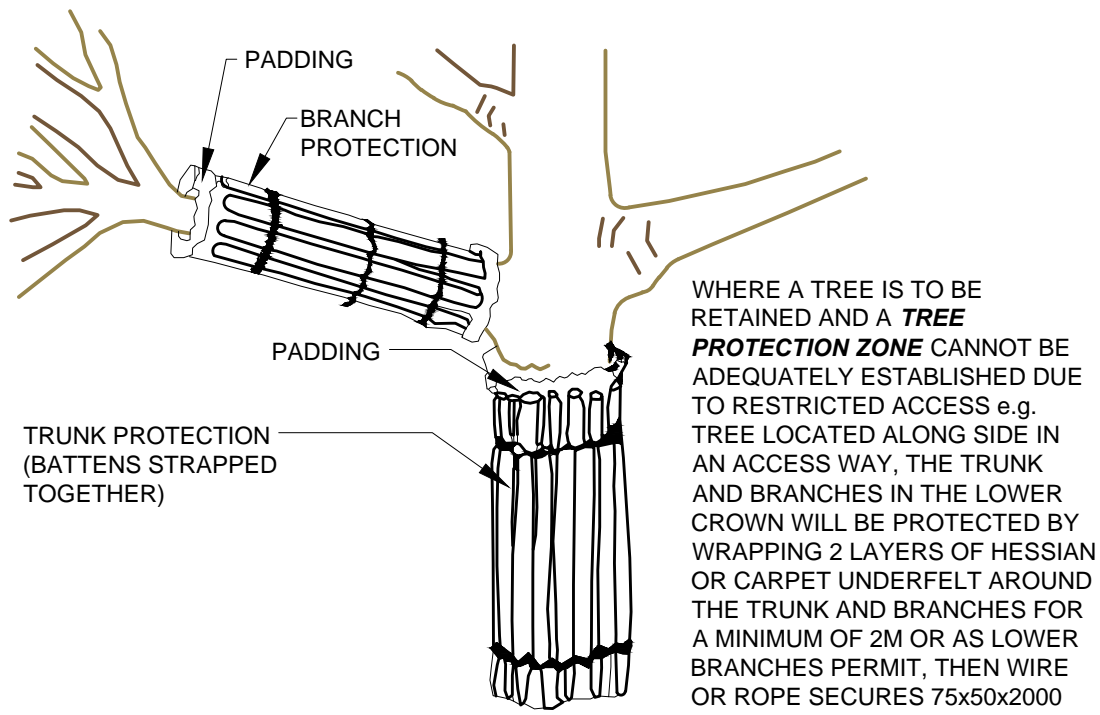
MASONRY RETAINING WALL DETAIL

approx 1:10



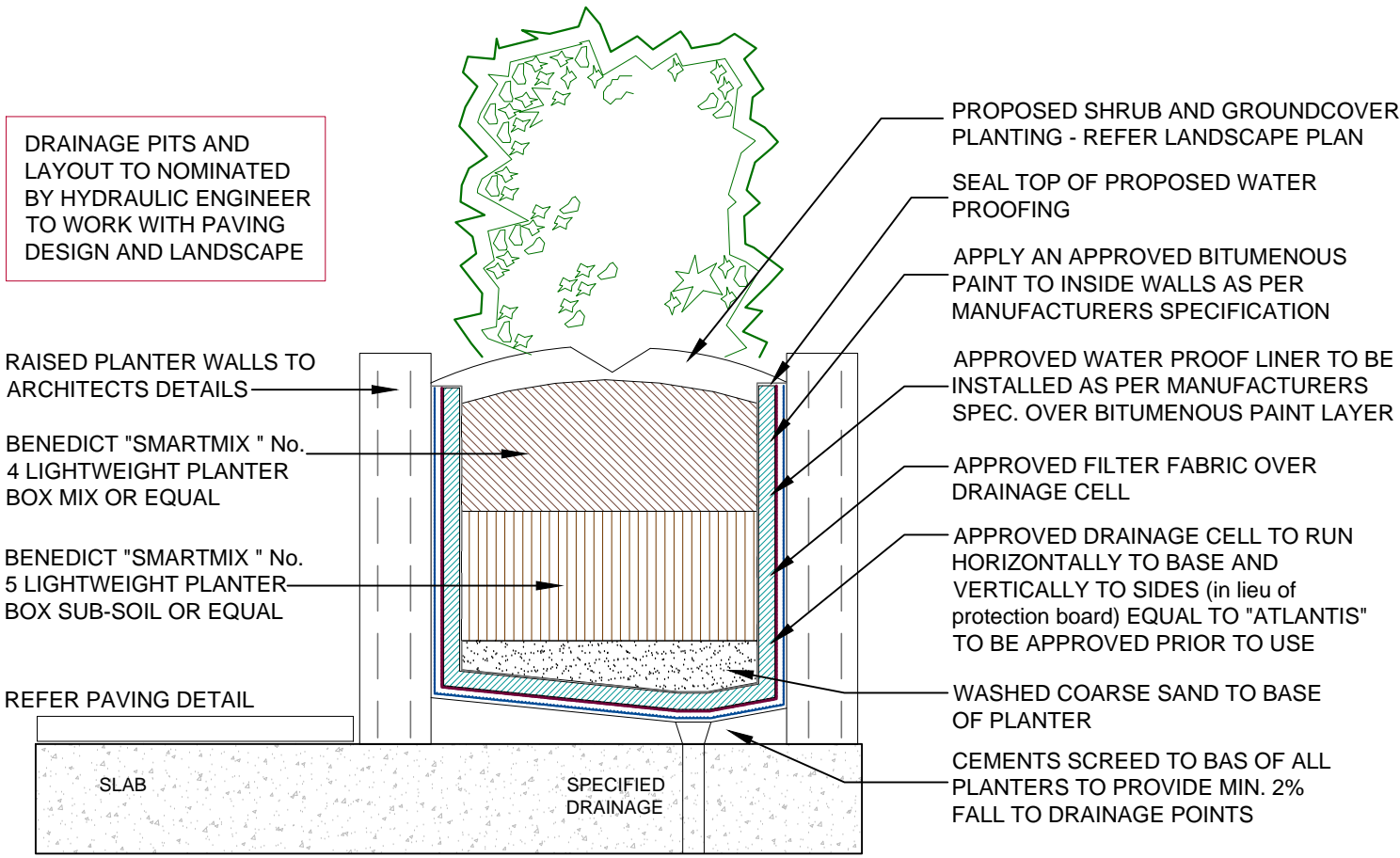
TREE PROTECTION ZONE

approx 1:10



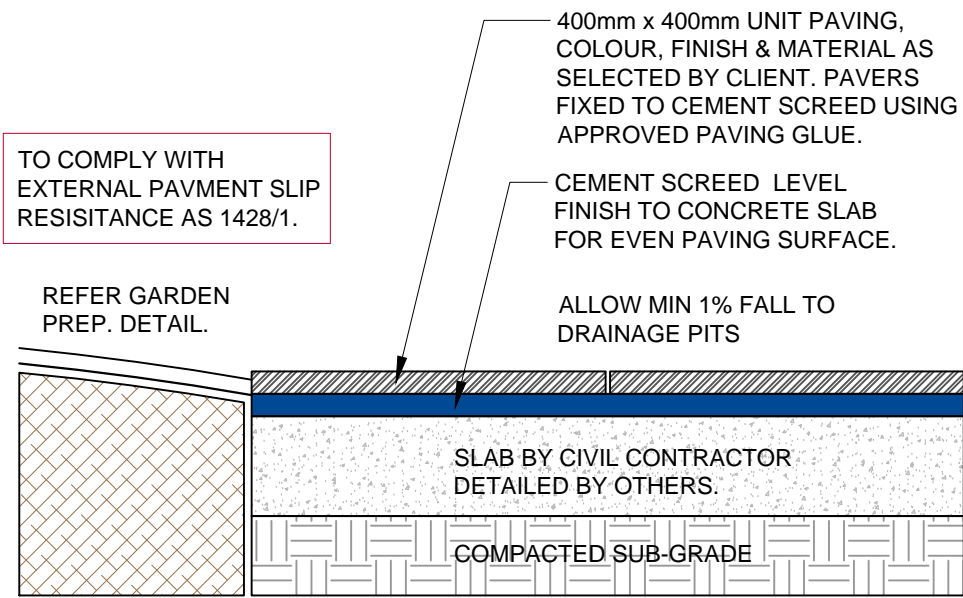
TYPICAL TRUNK PROTECTION WHERE TPZ FENCING NOT PRACTICAL

approx 1:10



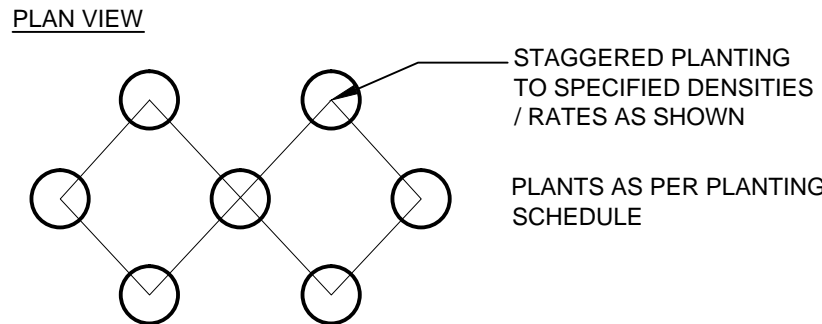
TYPICAL MASONRY PLANTER ON SLAB

approx 1:10

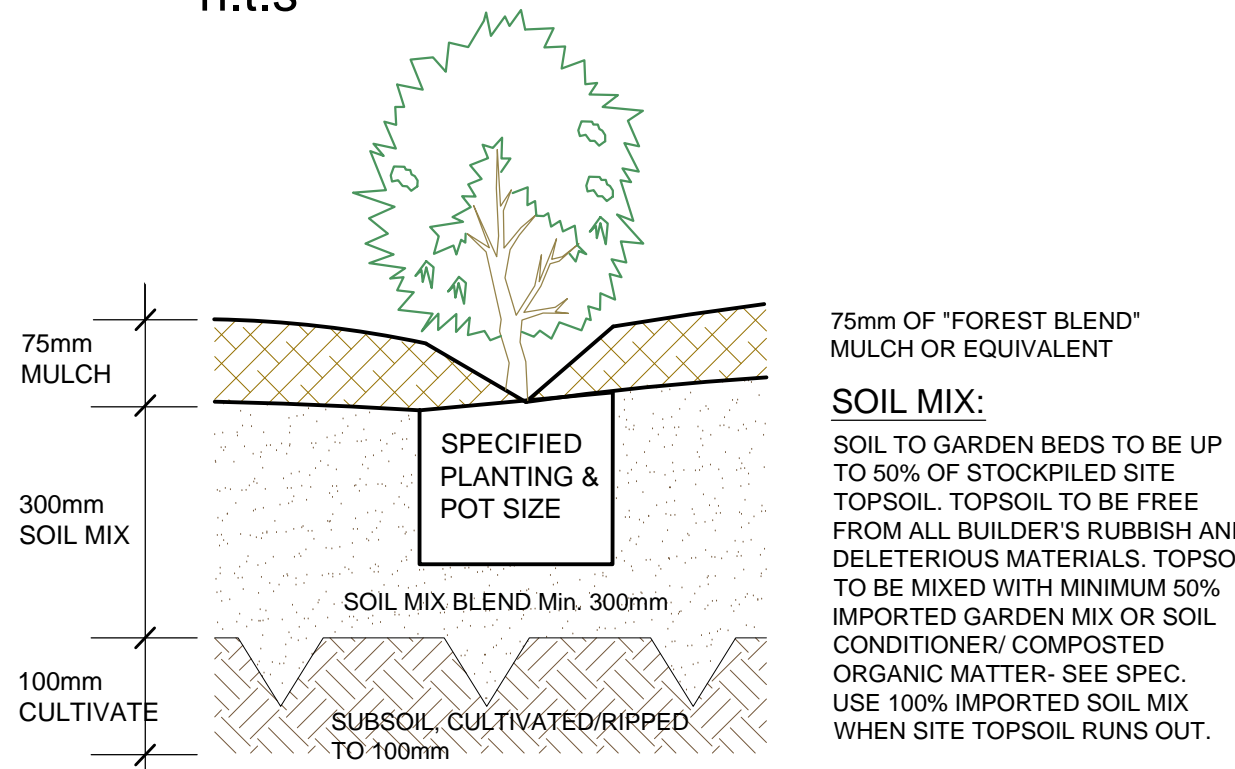


TYPICAL PAVING ON SLAB

approx 1:10



Groundcover Mass Planting Setout n.t.s



TYPICAL GARDEN AREA PREPARATION

approx 1:10



**Feature Plant:**  
*Doryanthes excelsa*  
Gymea Lily



**Hedging Native Shrub:**  
*Syzygium "Resilience"*  
Resilience Brush Cherry



**Native Grass:**  
*Dianella caerulea* "Little Jess"  
Little Jess Blue Flax Lily



**Native Grass:**  
*Poa polyformis* "Kingsdale"  
Blue Coastal Tussock Grass



**Native Tree:**  
*Elaeocarpus reticulatus*  
Blueberry Ash



**Native Shrub:**  
*Syzygium "Cascade"*  
Cascade Lillypilly



**Native Grass:**  
*Lomandra "Nyalla"*  
Dwarf Mat Rush



**Exotic Hedging Shrub:**  
*Viburnum odoratissimum*  
Sweet Viburnum






**Small Native Tree:**  
*Syzygium luehmannii*  
Small Leaved Lillypilly



**Exotic Grass:**  
*Linope muscari* "Evergreen Giant"  
Evergreen Giant Lilly Turf



**Groundcover:**  
*Trachelospermum jasminoides*  
Star Jasmine

 		<b>MACKENZIE ARCHITECTS</b> Chartered Architect No. 6033 ABN 46 129 502 772 4/3 The Postern Castlecrag NSW 2068 Phone: (02) 9967 9966 Fax: (02) 9967 9977 www.mackenziearchitects.com.au info@mackenziearchitects.com.au		 <p>PO Box 416, CREMORNE 2090 70 Alderson Street, CROWNS NEST, NSW 2065 Phone: 9438 1744 Fax: 9438 1766 Mob: 0413 981 351 www.concept.net.au enquiries@concept.net.au</p>		<b>CLIENT</b> MR JOHN ZHANG  LANDSCAPE ARCHITECT CONCEPT PH (02) 9438 1744 FAX (02) 9438 1766  ARCHITECT MACKENZIE ARCHITECTS PH (02) 9967 9966 FAX (02) 9967 9977		<table><tr><td>B</td><td>20/07/11</td><td>1.2m Lightweight metal front boundary fence detail added</td></tr><tr><td> </td><td> </td><td> </td></tr><tr><td> </td><td> </td><td> </td></tr><tr><td> </td><td> </td><td> </td></tr><tr><td>REV</td><td>DATE</td><td>NOTATION/AMENDMENT</td></tr><tr><td> </td><td> </td><td> </td></tr><tr><td colspan="3">DO NOT SCALE DRAWINGS. CHECK ALL DIMENSIONS ON SITE. FIGURED DIMENSIONS TAKE PRECEDENCE.</td></tr></table>		B	20/07/11	1.2m Lightweight metal front boundary fence detail added										REV	DATE	NOTATION/AMENDMENT				DO NOT SCALE DRAWINGS. CHECK ALL DIMENSIONS ON SITE. FIGURED DIMENSIONS TAKE PRECEDENCE.			<b>PROJECT:</b>  AT 2 BOBBIN HD RD & 1147-1149 PACIFIC HWY, PYMBLE		<b>TITLE:</b>  LANDSCAPE DETAILS		<b>STATUS:</b>  DEVELOPMENT APPROVAL	
B	20/07/11	1.2m Lightweight metal front boundary fence detail added																																		
REV	DATE	NOTATION/AMENDMENT																																		
DO NOT SCALE DRAWINGS. CHECK ALL DIMENSIONS ON SITE. FIGURED DIMENSIONS TAKE PRECEDENCE.																																				
ISSUE: B		DWG No: LPDA 11 - 275 / 5		PLOTTED:		SCALE: 1:100 @ A1		DATE: FEB 2011		JOB NO:																										
DRAWN:		CHECKED:		APPROVED:																																